



MEMMEN RIDGE OPEN SPACE



CRgov.com/trails • 303-814-7444



Fast facts about Memmen Ridge Open Space

Trail length	1.9 miles
Trail rating	Moderate
Trail surface	Native surface and paved
Wildlife highlights	Bluebirds and mule deer
Special comments	Ride the Ridge youth cycling race is held here each summer

An 8-foot-wide concrete trail connects to a network of native-surface trails and open space. The moderate-difficulty trail is great for mountain biking.

This area provides a quick escape into forested open space from nearby Downtown Castle Rock. The 43-acre parcel is located south of South Street Elementary School and can be accessed from a paved trail at Oman Road or the main trailhead parking lot on Oman Road.

The willows and cattails in the riparian area quickly change to a mature ponderosa pine ridge. The area provides views of the southern parts of Town.

The trail network has been adopted by 6202 Cycling Club through the POST Partners volunteer program. The paved trail has been adopted by Boy Scout Troop 261.

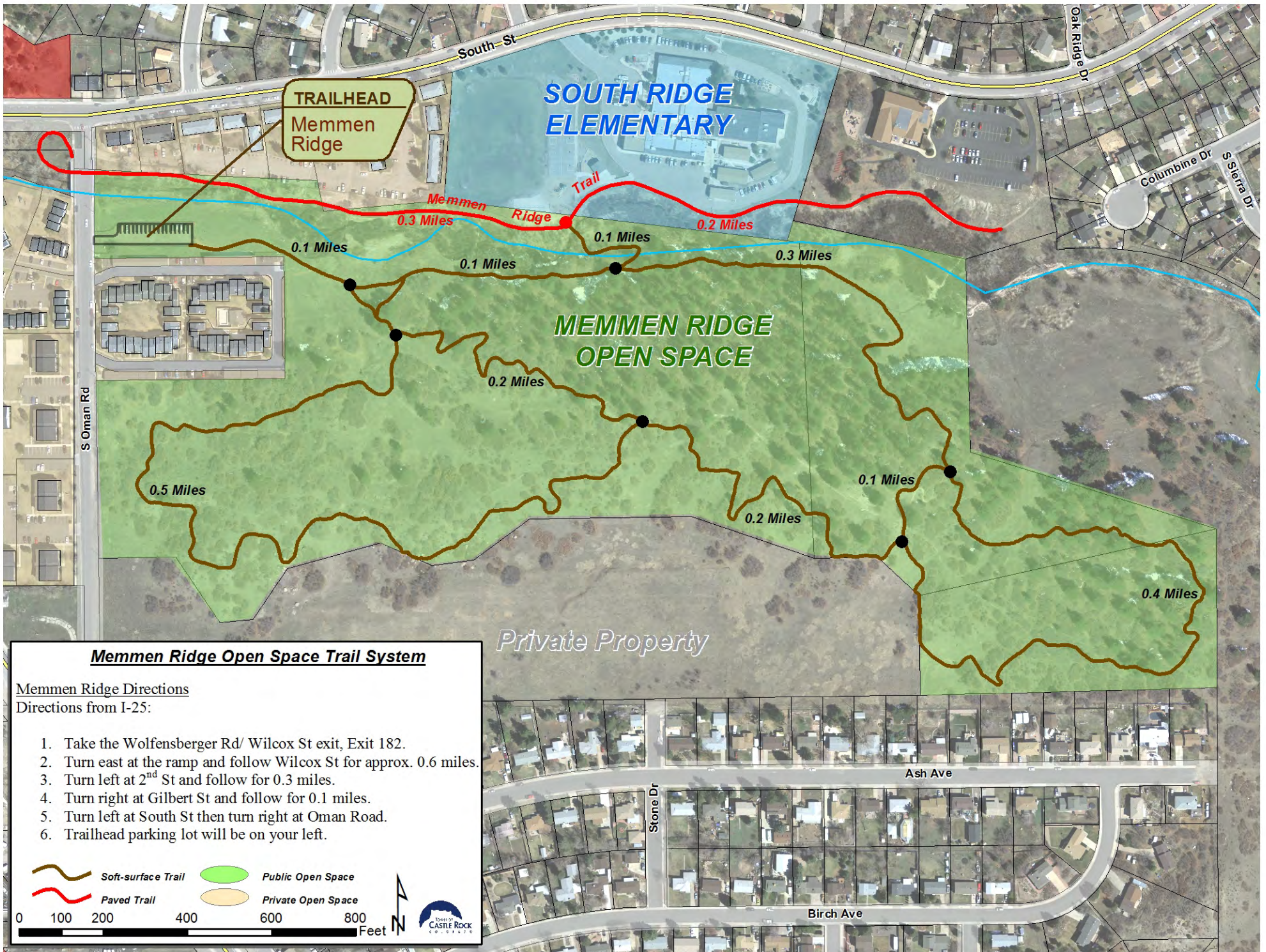


ADOPTED

6202 Cycling Club
Boy Scout Troop 261

For maps of the Town's other trails, scan this QR code.





Memmen Ridge Open Space Trail System

Memmen Ridge Directions

Directions from I-25:

1. Take the Wolfensberger Rd/ Wilcox St exit, Exit 182.
2. Turn east at the ramp and follow Wilcox St for approx. 0.6 miles.
3. Turn left at 2nd St and follow for 0.3 miles.
4. Turn right at Gilbert St and follow for 0.1 miles.
5. Turn left at South St then turn right at Oman Road.
6. Trailhead parking lot will be on your left.

-  Soft-surface Trail
-  Public Open Space
-  Paved Trail
-  Private Open Space

