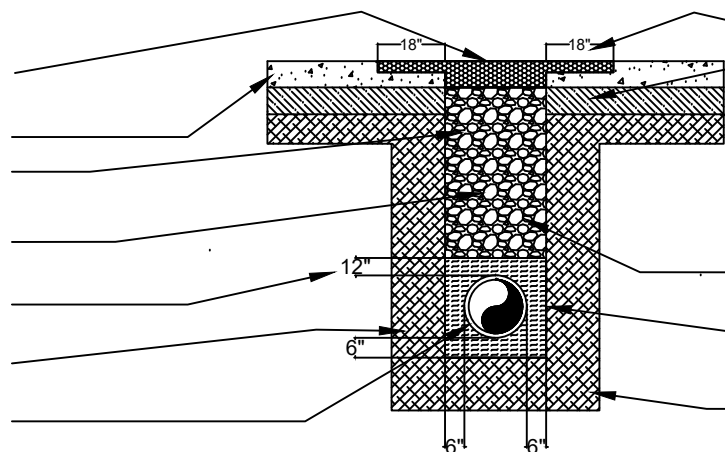


RIGHT-OF-WAY POTHOLE REPAIR

POTHOLE REPAIR

- CORE IS TO BE REPAIRED TO FULL DEPTH OF CONCRETE OR ASPHALT WITH HIGH STRENGTH NON-SHRINK GROUT.
- EXISTING PAVEMENT DEPTH
- POTHOLE NOT TO EXCEED 12" IN DIAMETER
- POTHOLE TO BE BACKFILLED WITH FLOWABLE FILL MEETING CLSM STANDARD (50 PSI BREAK) SEE MIX DESIGN BELOW
- MIN. 12" OF BEDDING ABOVE UTILITY (MUST MEET GRADATION SCALE)
- UNDISTURBED SOIL
- EXISTING UTILITY TO REMAIN UNDISTURBED AND BEDDED. INSPECTOR MUST VERIFY TOP OF UTILITY BEFORE BACKFILL.



STREET CUT REPAIR

- ASPHALT PATCH TO BE MILLED TO 2" DEPTH AND 18" WIDTH ON ALL SIDES OF PATCH TO MATCH EXISTING THICKNESS WITH HOT MIX ASPHALT (SX GRADE). INNER SURFACE TO BE TACKED WITH HSS-1.
- THIRD PARTY TESTER IS REQUIRED FOR ALL ASPHALT AND CONCRETE REPLACEMENT/PATCHING.
- EXISTING SUBGRADE MUST BE REPLACED WITH CDOT CLASS 6 OR EQUIVALENT
- STREET CUT MUST BE FILLED WITH FLOW FILL MEETING CLSM STANDARD (50 PSI) OR FLASH FILL
- UTILITY TO BE BEDDED 6" BELOW, 6" BOTH SIDES AND 12" ABOVE WITH SQUEEGEE MEETING GRANULAR BEDDING REQUIREMENTS BELOW.
- UNDISTURBED SOIL

NOTES:

1. ALL UTILITIES THAT ARE POTHOLED MUST BE VISUALLY INSPECTED BY INSPECTOR BEFORE BACKFILLING POTHOLE.
2. ALL POTHOLES AND STREET CUTS SHALL BE REPAIRED IN ACCORDANCE WITH THE ABOVE DETAIL UNLESS OTHERWISE SPECIFIED BY THE INSPECTOR.
3. ALL POTHOLES AND STREET CUTS MUST BE FLOW FILLED OR FLASH FILLED.
4. PRIOR TO PLACEMENT OF ASPHALT/CONCRETE, PAVEMENT EDGE SHALL BE SAW CUT TO A CLEAN, VERTICAL AND STRAIGHT EDGE.
5. ALL EDGES OF A STREET CUT PATCH MUST BE MILLED A MINIMUM OF 18' ON ALL SIDES TO A 2" DEPTH TO CREATE T-PATCH.
6. POTHOLE REPAIRS IN ASPHALT MUST BE REPAIRED PER INSPECTORS DISCRETION.
7. SEE GRANULAR BEDDING SIEVE ANALYSIS FOR BEDDING MATERIAL REQUIREMENTS.
8. POTHOLE DIAMETER SHALL NOT EXCEED MORE THAN 12".
9. IN UNIMPROVED AREAS, ALL DISTURBED AREAS SHALL BE REGRADED, SEEDED AND MULCHED. ALL SLOPES MUST BE COVERED WITH EROSION BLANKETS.
10. IN CONCRETE ROADWAYS, A MINIMUM OF 1/2 PANEL WIDTH OF 10'x5' SECTION WILL BE ALLOWED TO REMAIN, OTHERWISE THE ENTIRE CONCRETE PANEL MUST BE REPLACED.
11. IF SIDEWALK IS DAMAGED OR POTHOLES THE ENTIRE STONE(S) MUST BE REMOVED AND REPLACED PER THE INSPECTORS DISCRETION. CDOT CLASS B/D 4500 PSI MIX MUST BE USED.
12. BEDDING MATERIAL DEPTH WHEN INSTALLING UTILITIES MUST BE PER DETAIL OR PER INSPECTORS DISCRETION.
13. ASPHALT STREET CUT REPAIRS MUST HAS THIRD PARTY INSPECTOR ON SITE FOR DENSITY TESTING.
14. MEET WITH INSPECTOR ON ANY ALTERNATIVE REPAIRS OR SPECIAL PROVISIONS.

GRANULAR BEDDING MATERIAL SIEVE ANALYSIS

FLOWABLE FILL MIX DESIGN (ON SITE)		Sieve Size	Percent Passing
			1/2
QUIKRETE ALL PURPOSE WASHED GRAVEL (OR EQUIVALENT)	50 LBS.	3/8	90-100
QUIKRETE WASHED PLAY SAND (OR EQUIVALENT)	50 LBS.	#4	40-85
		#8	10-45
QUIKRETE PORTLAND CEMENT POWDER (OR EQUIVALENT)	3-5 LBS.	#16	0-20
WATER	1.5 GALLONS	#100	0-3

Sheet Revisions

Date	Comments



Town of Castle Rock
 100 N. Wilcox St.
 Castle Rock, CO 80104
 Phone: (720) 733-2200
 Fax: (720) 733-2217
Development Services

RIGHT-OF-WAY REPAIR

Issued By: Town of Castle Rock, Development Services March 31, 2010

DETAIL PLAN NO.

ROW-1

Sheet 1 of 1